



MONTHLY MEMBERSHIP PROGRESS REPORT

District 8 S

Results as of: 6/30/2015

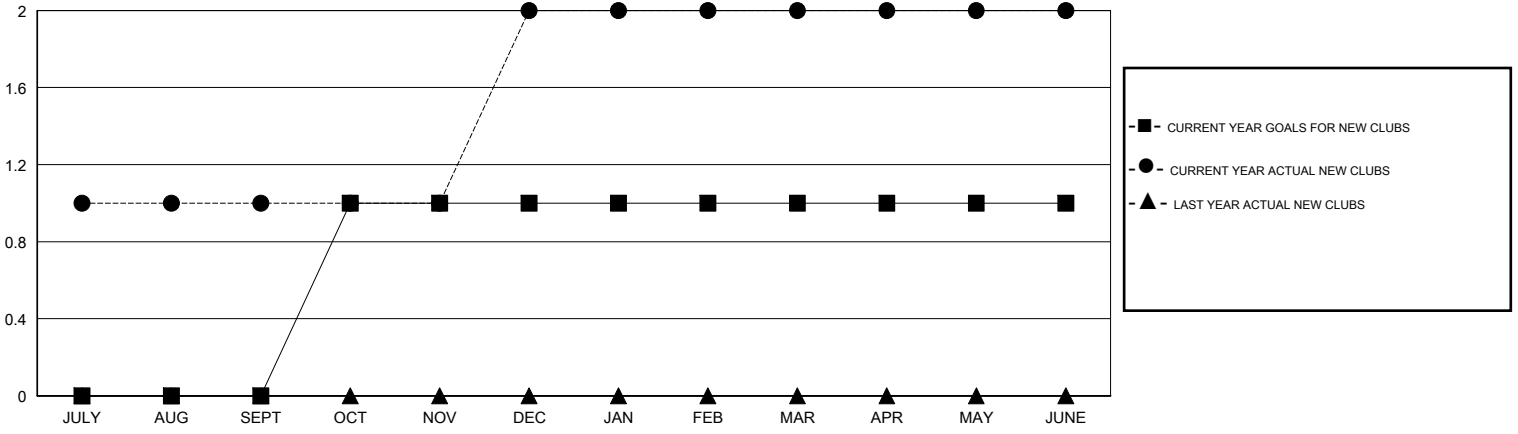
GMT: HAL GRIFFIN

LOCATION LOUISIANA

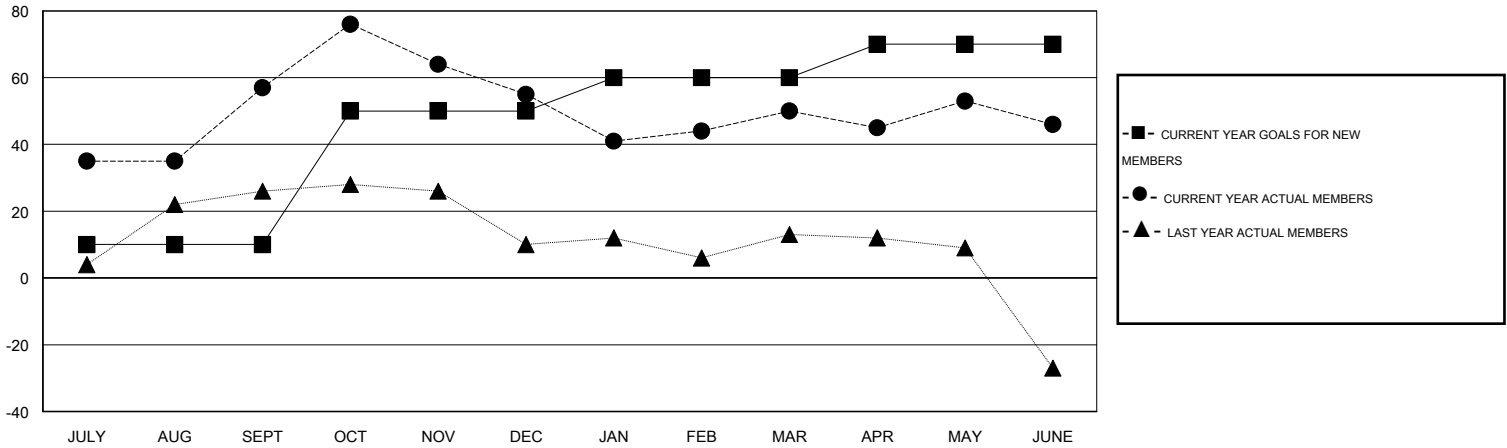
GMT CA 1

Clubs					Members				
RESULTS FOR 2014-2015					RESULTS FOR 2014-2015				
QUARTER	NEW CLUB GOAL	NEW CLUBS	DROPPED CLUBS	NET GAIN/LOSS	QUARTER	NEW MEMBER GOAL	CHARTER AND NEW MEMBERS ADDED	DROPPED MEMBERS	NET GAIN/LOSS
JULY/AUG/SEPT	0	1	0	1	JULY/AUG/SEPT	10	100	43	57
OCT/NOV/DEC	1	1	0	1	OCT/NOV/DEC	40	58	60	-2
JAN/FEB/MAR	0	0	1	-1	JAN/FEB/MAR	10	41	46	-5
APR/MAY/JUNE	0	0	0	0	APR/MAY/JUNE	10	34	38	-4

GOALS AND ACTUAL NEW CLUBS CUMULATIVE



GOALS AND ACTUAL MEMBERS CUMULATIVE



DROPPED CLUBS: 1	29 CLUBS OF 41 ADDED 1 OR MORE NEW MEMBERS	<u>GENDER DISTRIBUTION</u>			
<u>DROPPED MEMBERS</u>		MALE	698 (59.30%)		
DECEASED	26	FEMALE	479 (40.70%)		
CLUB CANCELLED	10	CLICK HERE FOR HEALTH ASSESSMENT DATA			
OTHER	151			FAMILY UNIT MEMBERS	348
TOTAL	187			HEAD OF HOUSEHOLD	162
		NON-HEAD OF HOUSEHOLD	186		